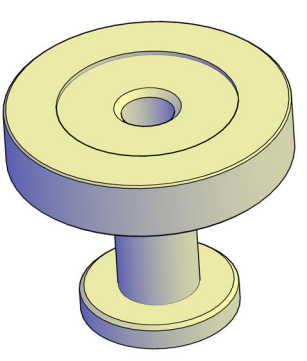
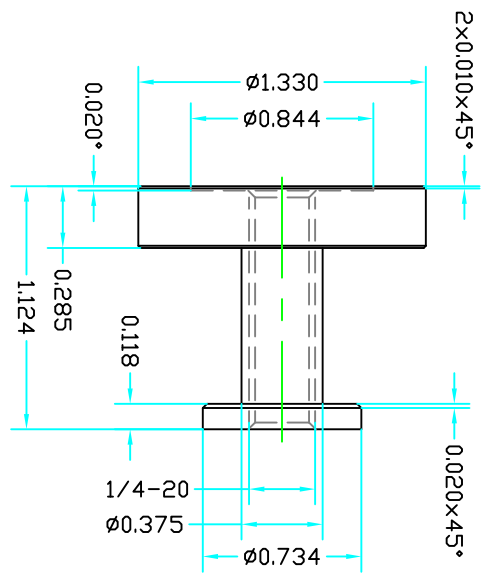
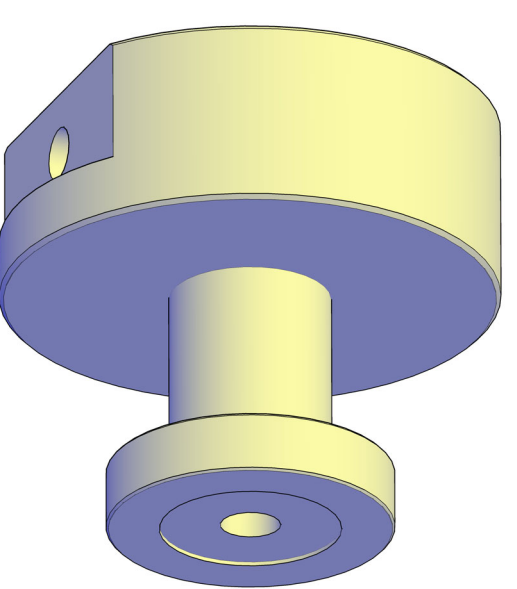
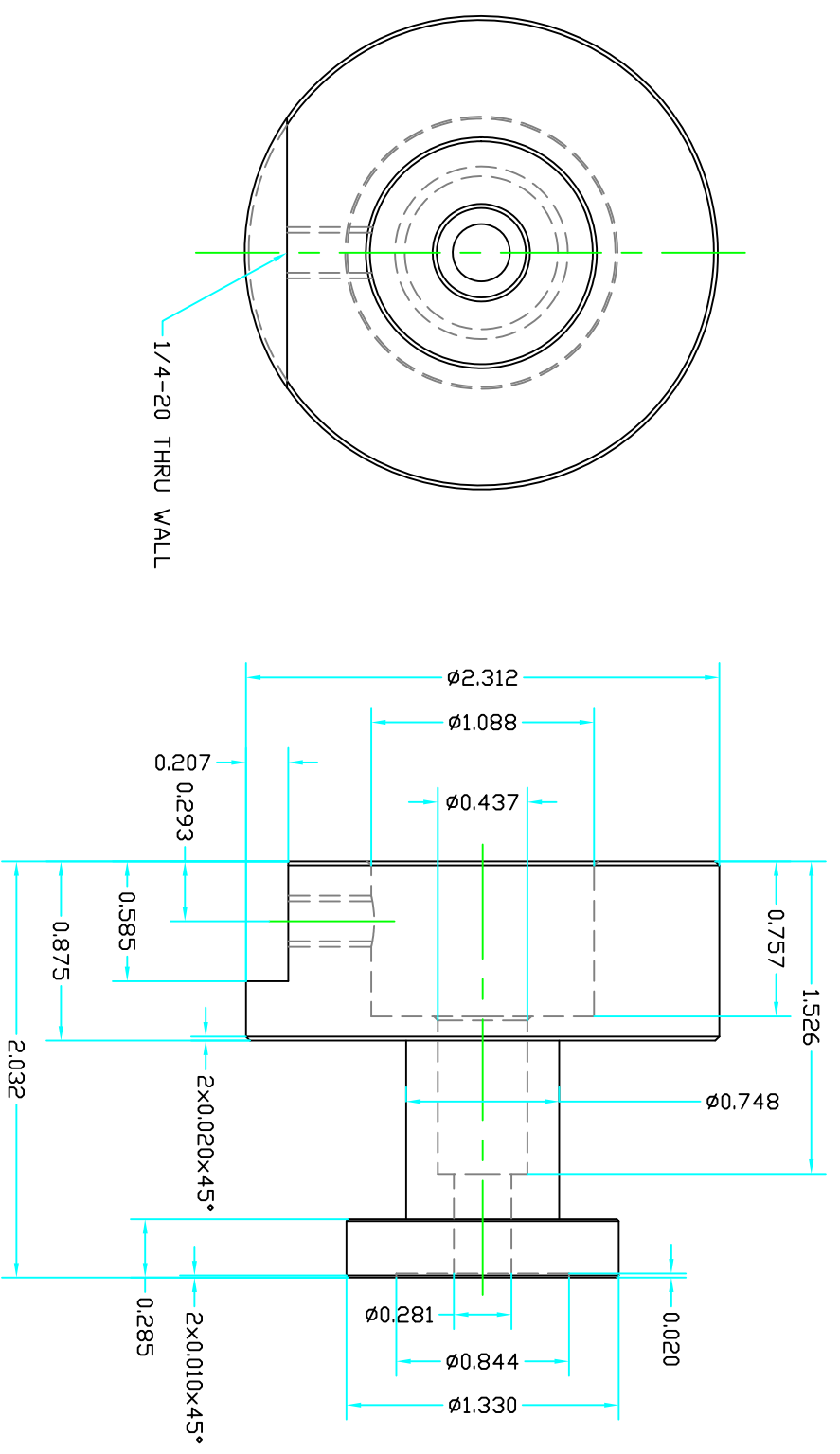


ZONE	REV	DESCRIPTION	DATE	APPROVED



PART 1

PART 2

A

B

C

D

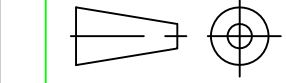
PARTS LIST		PART DESCRIPTION		REF. SHEET/DWG.
PART 2	1	EA	FLANGE OUTER	ST:STEEL 303 ELECTROPOLISH
PART 1	1	EA	FLANGE OUTER	ST:STEEL 303 ELECTROPOLISH

UNLESS OTHERWISE SPECIFIED	FABRICATION TOLERANCES	MACHINING TOLERANCES
1. DIMENSIONS ARE IN INCHES.	±0.10	±0.01
2. MACHINE SURFACES TO BE FLAT, SQUARE, PARALLEL & CONCENTRIC BELY DIV 12	±0.13	±0.015
3. WITHIN .001 FEET 5 INCHES OR .001 TIR AS APPLICABLE	±0.20	±0.020
4. BREAK ALL SHARP CORNERS .01 x 45° CHAMFER	±0.30	±0.030
5. TILLET'S SHOWN SHARP = 1/4 RAD	±0.40	±0.040
6. TILLET'S SHOWN SHARP = 1/4 RAD	±0.50	±0.050
7. CUSTOM BORE & BEAD TOLERANCES 1/16 x 45°	±0.60	±0.060
8. CENTERS PERMISSIBLE	±0.70	±0.070
9. DO NOT SCALE DRAWING	±0.80	±0.080
10. ALL WELDING TO CONFORM TO LATEST AWS STANDARDS	±0.90	±0.090

PERMISSIBLE VARIATION IN INCH DIMENSIONS WITHOUT TOLERANCES	SIZE	SCALE
12 TO 60	D	1:1
60 TO 180	D	1:1
OVER 180	D	1:1

DATE	BY	CHKD	APP'D	TITLE
12/01/22	AD	KH	KH	SRF FLANGE

REV	DATE	BY	CHKD	APP'D	DESCRIPTION
1	DF				1



Open Source Instruments Inc.
 117
 117.000.01
 1 DF 1
 A