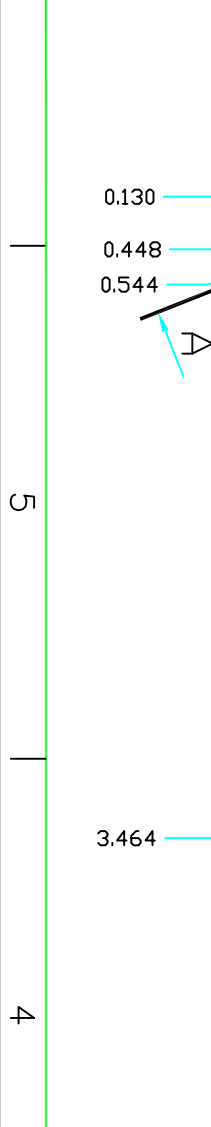
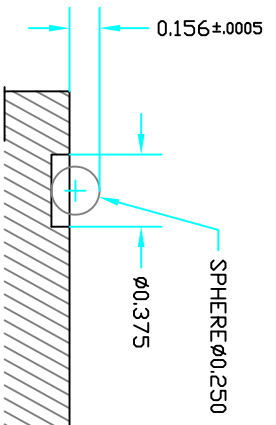
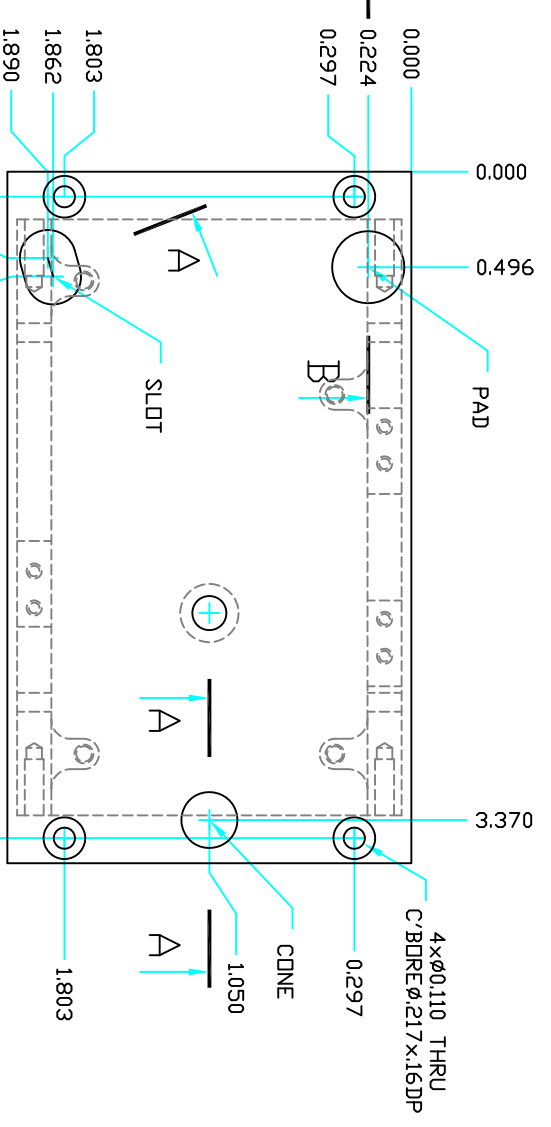
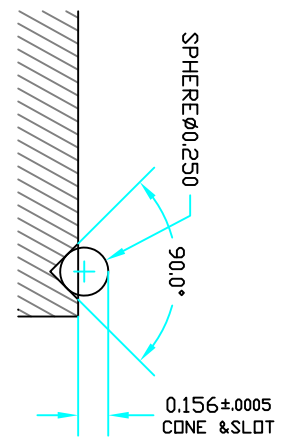
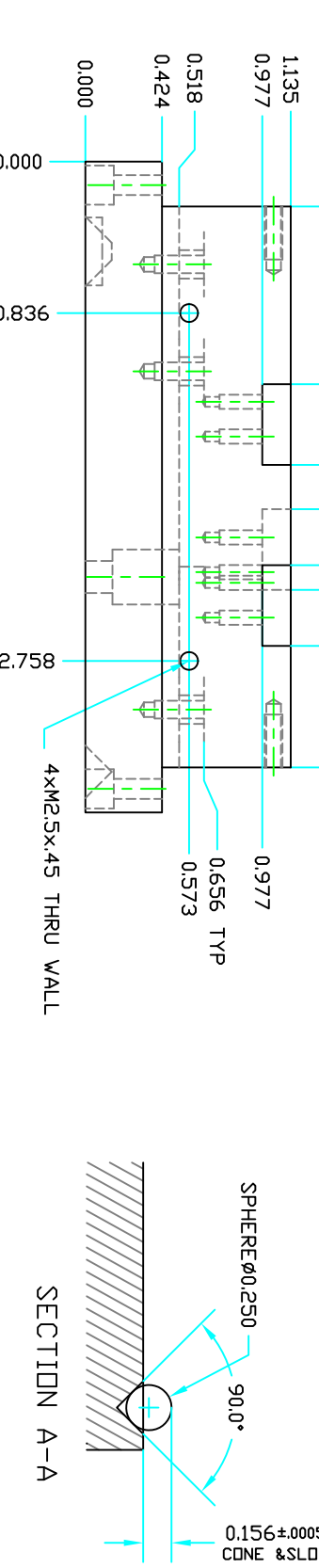
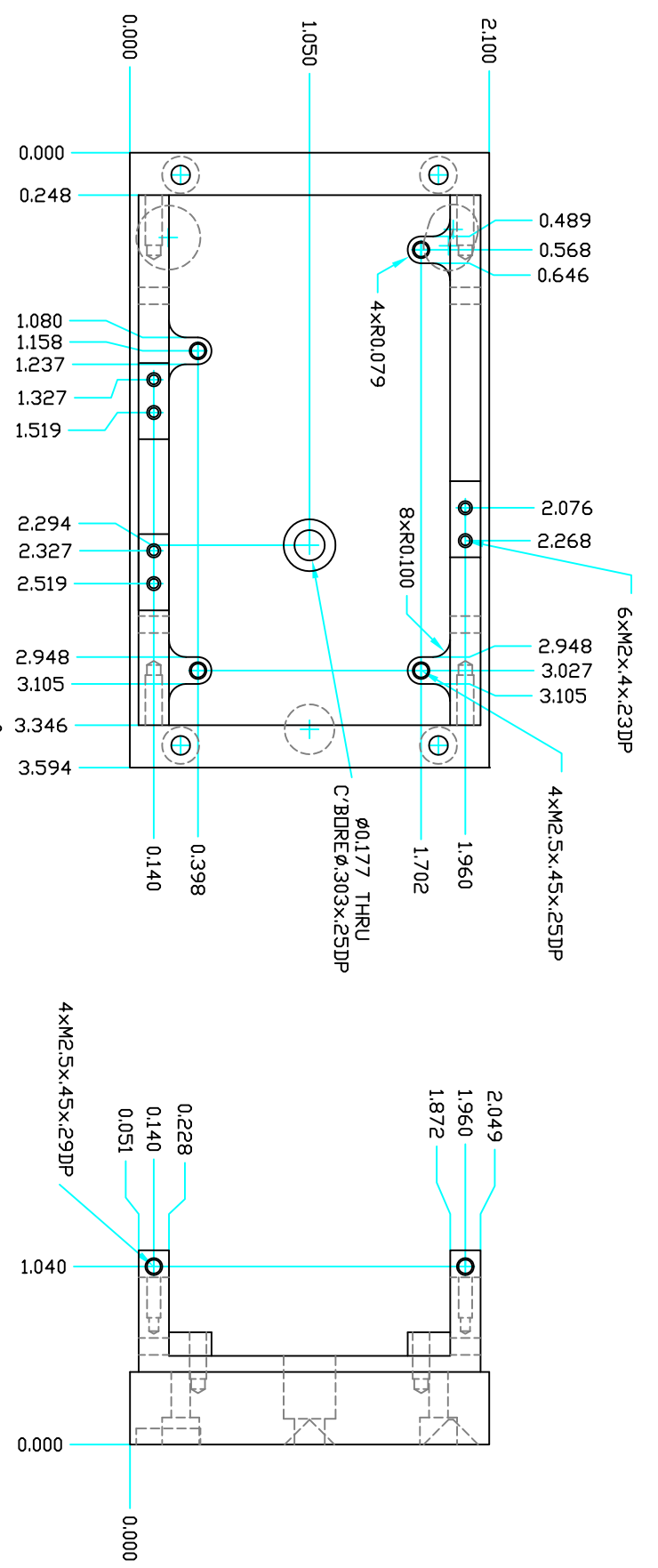
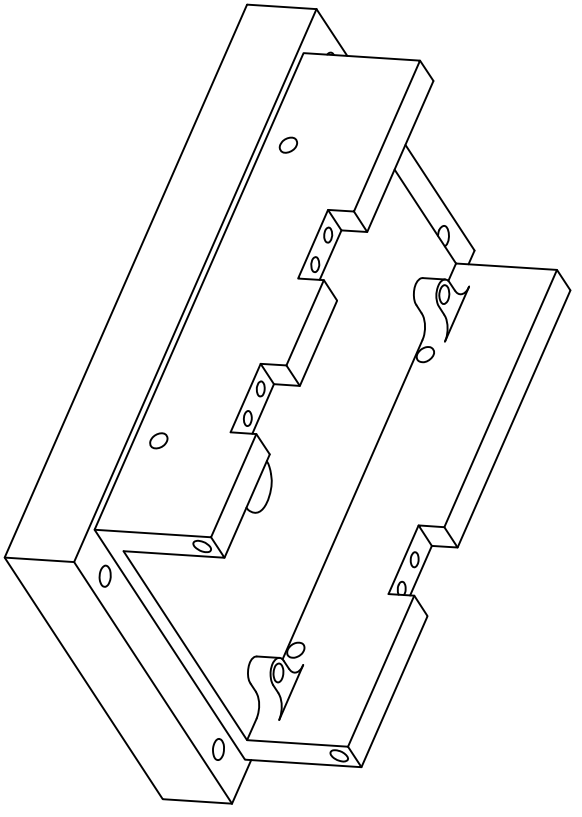


REVISIONS			DATE	APPROVED
ZONE	REV	DESCRIPTION		
DS	B	HOLES QTY CHANGED	05/23/23	



- NOTES:
- DD NOT SANDBLAST
  - MASK ALL THREADS BEFORE PLATING

UNLESS OTHERWISE SPECIFIED		
F1NDU/REF#	QTY	UM
1	EA	
PART NAME: <b>BASE</b>		
MATERIAL: <b>ALUMINUM 6061 BLUE ANODIZED</b>		
PART DESCRIPTION: <b>ALUMINUM 6061 BLUE ANODIZED</b>		
REF. SHEET/DWG:		
FABRICATION TOLERANCES		
PERMISSIBLE VARIATION IN INCH DIMENSIONS WITHOUT TOLERANCES		
	BELOW 12	40.00
	BELOW 60	40.10
	60 TO 180	40.20
	180 TO 48	40.30
	OVER 48	40.40
	OVER 180	40.50
ANGLE TOLERANCE 40.5°		
MACHINING TOLERANCES		
	BELOW 12	40.10
	BELOW 18	40.05
	18 TO 48	40.00
	48 TO 180	40.00
	OVER 180	40.00
	OVER 48	40.05
	OVER 180	40.05
ANGLE TOLERANCE 40.1°		
SURFACE TEXTURE		
TOLERANCES ARE NOT ACCUMULATIVE		
	125	
DRAWING APPROVAL		
DESIGNED	DATE	SCALE
AD	05/19/23	1:1
CHECKED		
KH		
APPROVED		
KH		
DRAWING NUMBER: 111		
PART NUMBER: 11102.00.01		
SHEET: 1 OF 1		
REVISION: B		

1. DIMENSIONS ARE IN INCHES  
 2. MACHINE SURFACES TO BE FLAT SQUARE PARALLEL & CONCENTRIC BELDY 12  
 3. WITHIN .001 FOR 5 INCHES OR .001 TOR AS APPLICABLE  
 4. MARK ALL DETAILS EXCEPT COMMERCIAL PARTS WITH DWG.  
 5. ITEM NUMBER.  
 6. BREAK ALL SHARP CORNERS .01 x 45° CHAMFER.  
 7. FILET'S SHOWN SHARP = .04 RADIUS  
 8. FILET'S SHOWN CLASS 2B THREADS, MIN DEPTH .15 x DIA. ANGLE TOLERANCE 40.1°  
 9. FINISH HOLE, BEVELD HOLES 1/16 x 45°  
 10. DIM CENTERS PERMISSIBLE.  
 11. DO NOT SCALE DRAWING.  
 12. ALL WELDING TO CONFORM TO LATEST AWS STANDARDS  
 13. ALL WELDING TO CONFORM TO LATEST AWS STANDARDS

CPMS SILHOUETTE CAMERA, BLUE  
 BASE

Open Source Instruments Inc.

DATE: 05/19/23  
 SCALE: 1:1  
 SHEET: 1 OF 1  
 REVISION: B

6 5 4 3 2 1

A B C D

6 5 4 3 2 1

A B C D