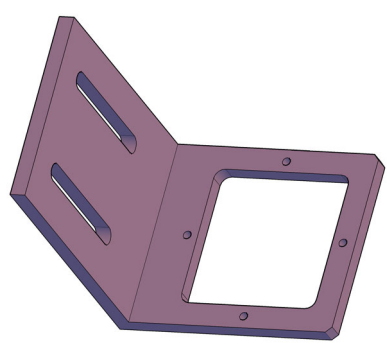
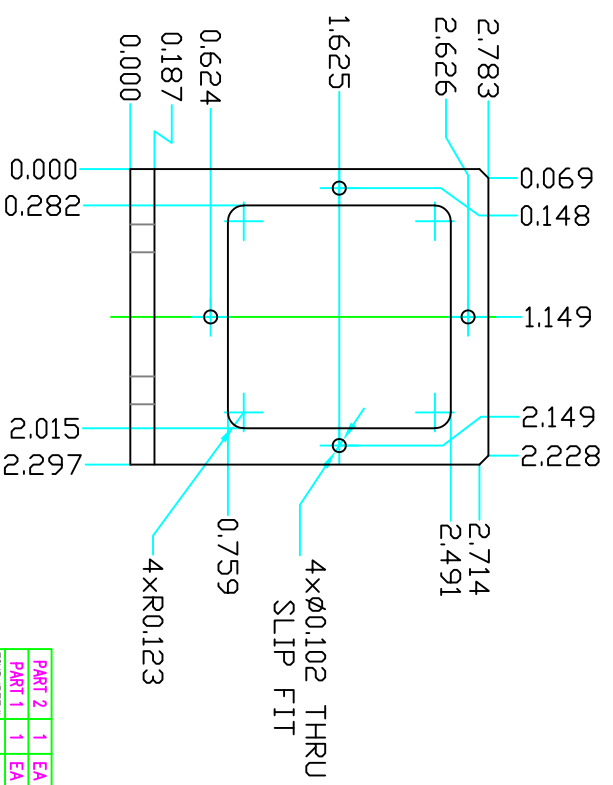
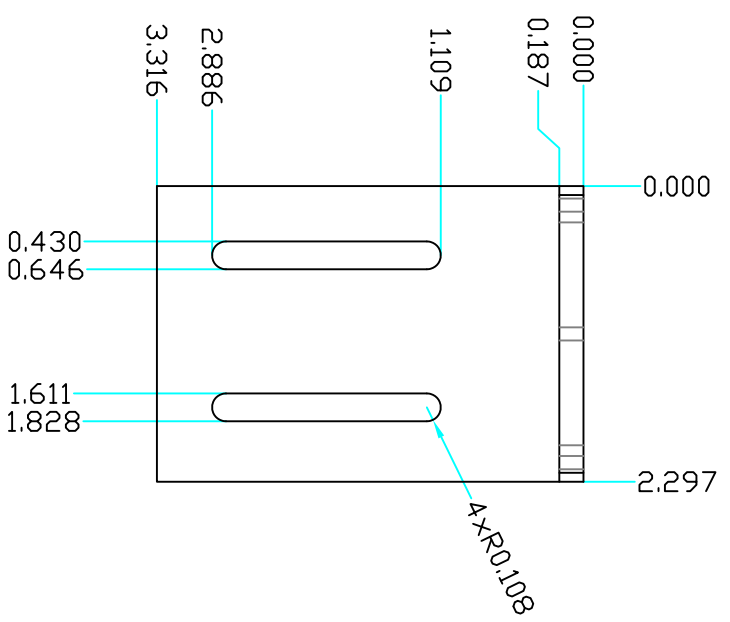
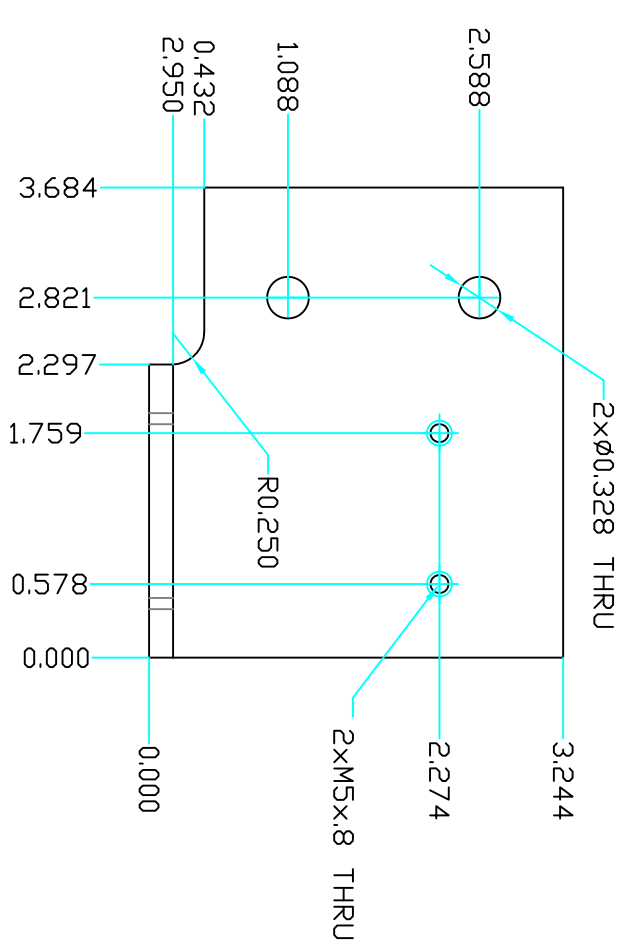
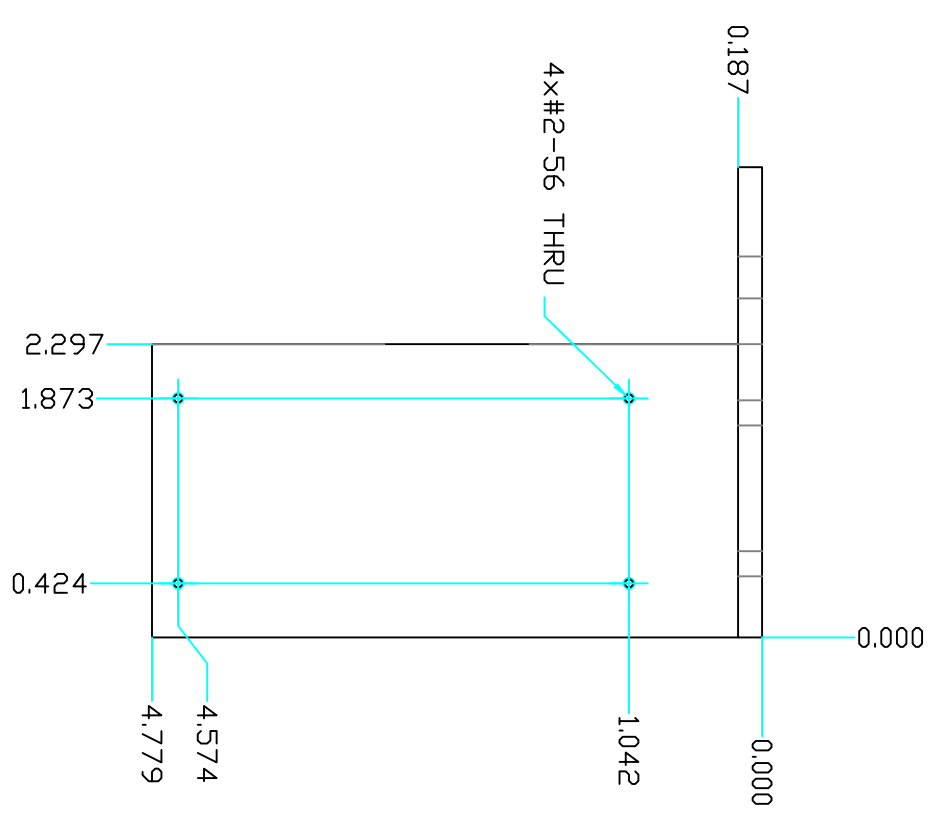
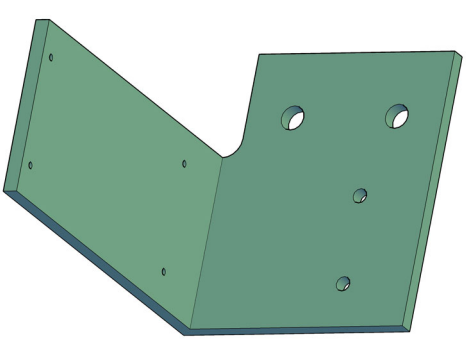


ZONE	REV	DESCRIPTION	REVISIONS	DATE	APPROVED



PART 2

PART 1

PARTS LIST		PERMISSIBLE VARIATION IN INCH DIMENSIONS WITHOUT TOLERANCES		MACHINING TOLERANCES	
1	DIMENSIONS ARE IN INCHES.	±0.10	BELOW 12	±0.005	±0.004
2	MACHINE SURFACES TO BE FLAT, SQUARE, PARALLEL & CONCENTRIC BELLY 12	±0.13	BELOW 18	±0.005	±0.004
3	WITHIN .001 TIR 5 INCHES OR .001 TIR AS APPLICABLE	±0.18	BELOW 18	±0.005	±0.004
4	BREAK ALL SHARP CORNERS .01 x 45° CHAMFER	±0.20	OVER 18	±0.005	±0.004
5	TILETS SHOWN SHARP = 1/4 RAIL	±0.30	OVER 48	±0.005	±0.010
6	ITEM NUMBER	±0.30	OVER 48	±0.005	±0.010
7	FILLET'S SHOWN SHARP = 1/4 RAIL	±0.30	OVER 48	±0.005	±0.010
8	ANGLE TOLERANCE 40.5°	±0.30	OVER 48	±0.005	±0.010
9	DO NOT SCALE DRAWING.				
10	ALL WELDING TO CONFORM TO LATEST AWS STANDARDS				

REV	DATE	BY	CHKD	APP'D	TITLE
1	05/10/22	AD	KH	KH	DFPS SETUP 4X4 HOLDER
2					
3					
4					
5					
6					
7					
8					
9					
10					

REV	DATE	BY	CHKD	APP'D	TITLE
1	05/10/22	AD	KH	KH	DFPS SETUP 4X4 HOLDER
2					
3					
4					
5					
6					
7					
8					
9					
10					

6 5 4 3 2 1

A B C D

